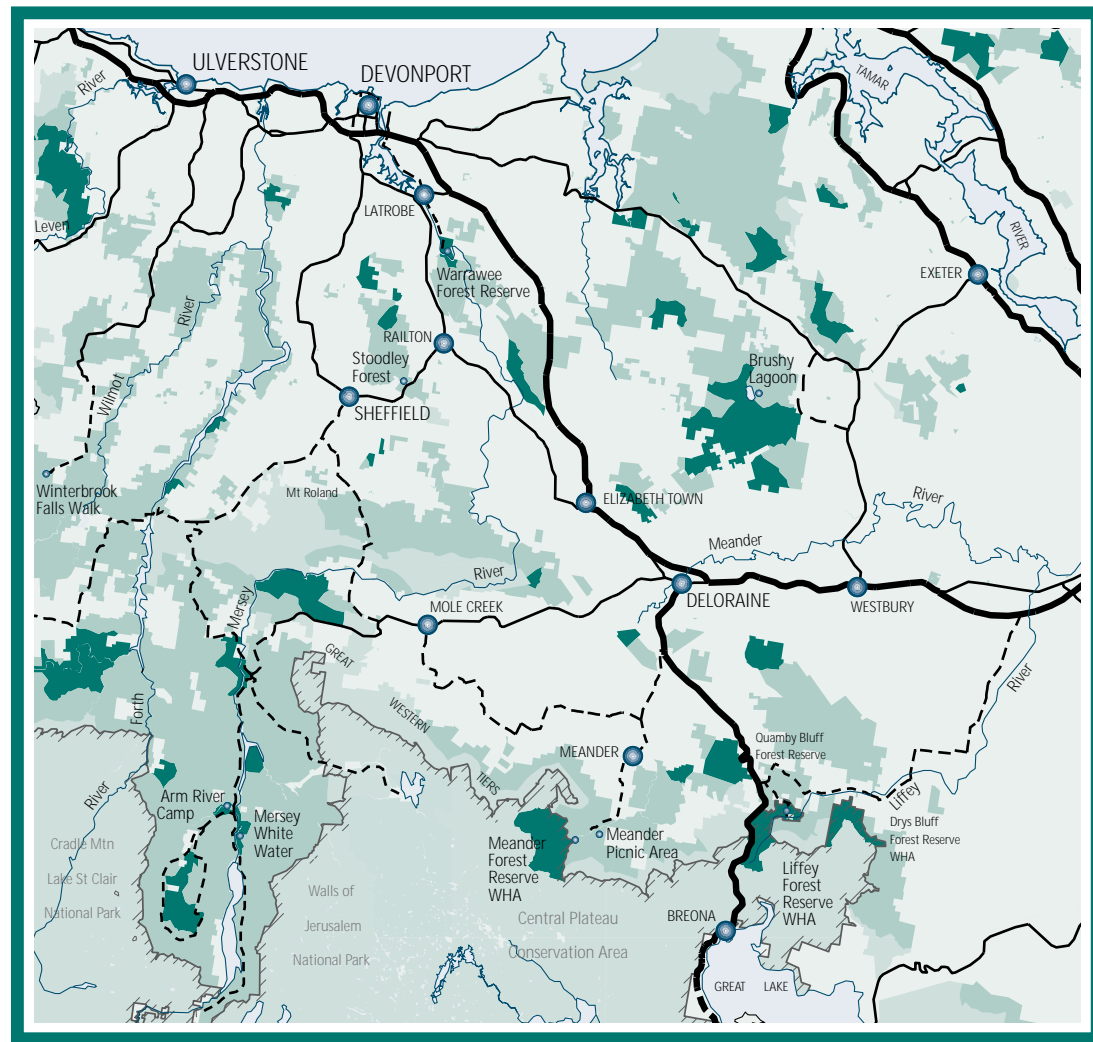




0 12.5 Km

State Forest  
Forest Reserve



FOR FURTHER INFORMATION

Forestry Tasmania's website is  
[www.forestrytas.com.au](http://www.forestrytas.com.au)

Contact the Forestry Tasmania  
Devonport Office

or

phone (03) 6424 8388  
Open business hours Monday - Friday



*Disclaimer: Visitors to this area should be aware that natural hazards occur within Tasmania's forest environments. Forestry Tasmania does not accept liability for any injury or damage resulting from such hazards.*

# Northern Forests

ACCESS • ACTIVITY • ADVENTURE



## INDEX OF SYMBOLS

- |  |                  |  |                |  |               |  |                   |
|--|------------------|--|----------------|--|---------------|--|-------------------|
|  | Information      |  | Picnic Area    |  | Hike Trail    |  | Fishing           |
|  | Disabled Access  |  | Picnic Shelter |  | Gas Barbecue  |  | Horse Trail       |
|  | Toilets          |  | Nature Walk    |  | Wood Barbecue |  | Great Short Walks |
|  | Kayaking/Rafting |  | Lookout        |  |               |  |                   |



Forestry Tasmania



Forestry Tasmania

GROWING OUR FUTURE

## VISITING THE NORTHERN FORESTS

Between the rich farming country on the coast and the heights of the Central Plateau Conservation Area lie areas of State forest nestled under the Great Western Tiers. If fast flowing rivers and waterfalls, or peaceful meandering streams and temperate rainforest or wet eucalypt forests is what you seek, then these forests are for you.

Devonport and Deloraine are ideal starting points to explore the forests. Contact the TVIN's to locate a guide or local knowledge to get the best from your forest experience. From watching a platypus at play in a river or riding a horse trail, you will get more from your trip by seeking out a tourist operator. Driving through the rich farmlands towards the Tiers you may see blue gum 'tree farms'. Directly under the Tiers much of the native forest harvesting is hard to see. After timber harvesting operations, the area is resown back to native forest using local seed. After a few years of growth the forest regains its natural appearance as native species of flora and fauna return.

Drive with care through the forests as many of the roads are unsealed and can become slippery in the wet and dusty when dry. Many of the sites mentioned here have gas barbecues, however if you are visiting more remote areas then taking a gas barbeque with your picnic is a good idea.

## LIFFEY FOREST RESERVE

Linked at the top of the Tiers to the Central Plateau Conservation Area is the World Heritage Area listed Liffey Falls Forest Reserve. The main access road to visit this special reserve is off the Lake Highway.

### Liffey Picnic Area



Access along a steep narrow road to a large but secluded picnic area with shelters, gas barbecues and disabled access toilets. An ideal place to relax and enjoy a walk to the falls.

### Liffey Falls Track



This 40 minute return walk through wet eucalypt forest and tall man ferns has viewing points for the upper falls and cascades. A steeper descent allows access to the base of the majestic Liffey Falls.

For those seeking a longer quieter walk of 3 hours return, a separate track continues downstream to the Gulf Road Picnic Area.

### Big Tree Stroll



A one minute walk but hidden from the picnic area is a large eucalypt which has a boardwalk around its base for ease of viewing and to protect the roots from the compaction of many feet.

### Liffey River Track



The track starts at the Liffey Valley Lookout (and well worth the time to soak in the vista) located under the Tiers, off the Lake Highway, before Pine Lake. From the lookout follow the track and river downstream to the Liffey Picnic Area about 1.5 hours one way. Return the same way or meet your driver at the picnic area.

## UP IN THE MEANDER VALLEY

Under the backdrop of the Great Western Tiers, past the village of Meander lies the headwaters of the Meander River. A haven for bushwalkers and picnickers and those seeking adventures activities that are offered by commercial tourism operator's, such as abseiling or horse riding.

### Meander Picnic Area



An ideal starting point to explore the surrounding forest areas. Enjoy a barbecue or picnic before discovering the short streamside walk with its Gondwana species. Interpretation at this site also allows you to tap into the fascinating history of the area and gain insight into the local community's forest heritage.

### Scotts Road Lookout



4 km up from the Meander Falls Road on this windy track through working forests gets you to a lookout with sweeping views over the valley and tiers.



### Meander Bushwalks



An information booth located at the end of the road car park provides details of the walks in the area. For those short of time take a 10 minute stroll over the swingbridge to get a feel of the magnificent rainforest in this World Heritage Area.

### Meander Falls Track



This 5-6 hour return walk gets you right under the Tiers with the beautiful falls, just fantastic when frozen in winter.

### Split Rock Track

Starts at the swingbridge over the Meander River and features sandstone rock formations and pretty waterfalls. Expect to spend 2-3 hours on this track.

### Stone Hut/Bastion Cascade Circuit

This 5-6 hour circuit takes you to delightful areas of tall sandstone cliffs and rock overhangs called 'The Croft'.

### Chasm Falls and Zig-Zag Rock Track

This 3-4 hour return walk from Smoko Creek follows old forestry roads and creeks before the track get steeper near the falls.

## UP IN THE MERSEY VALLEY

A favourite route to access the Walls of Jerusalem National Park or Lakes Parangana and Rowallan for trout fishing this area has much more to offer.

### Arm River Forest Reserve



Home to the Arm River Outdoor Education Centre, which is available for private hire, school camps, sporting groups and backpackers. It is suitable for large groups and has many walks through the surrounding forest and along the river to the Arm Falls. This site is located close to the Mersey White Water Course. Booking essential by phoning (03) 6424 8388.

### Mersey White Water Forest Reserve



Located between Lakes Rowallan and Parangana, this reserve is a favourite for canoeing and rafting expeditions. National and State championships are held here on a regular basis and is considered one of the best courses in the country.

## MORE PLACES OF INTEREST



### Quamby Bluff Forest Reserve



A 360 degree panorama is the reward for this 4-5 hour return steep walk to the top. Views of the Great Western Tiers across to Devonport and Launceston on a clear day are breathtaking.

### Stoodley Forest Walk



Located on the Railton-Sheffield road is something different from the eucalypt dominated forests. Experimental forest types planted in the 1940's helped determine today's most viable species. A 30 minute loop walk takes you through towering exotics, such as Douglas Fir, European beech, radiata pine and a fine stand of Tasmanian blue gum.

### Warrawee Forest Reserve



Located close to Latrobe on the Mersey River, this idyllic reserve boasts disabled fishing lakes as well as river fishing. Managed by the Latrobe Landcare group this reserve offers a quiet place to enjoy a picnic, barbeque, even a swim in the river or a stroll along the river bank. Spot a platypus swimming amongst the reeds and trees that line the river, from the viewing platform.

### Brushy Lagoon



For those with the current licences and a passion for trout fishing then why not try this spot. Turn off the B72 onto the C714 at Birrale. Put your boat in at the ramp or wade the shores to get that fish for the barbie.